



Palette News

Official Newsletter: McClelland Guild of Artists Inc.

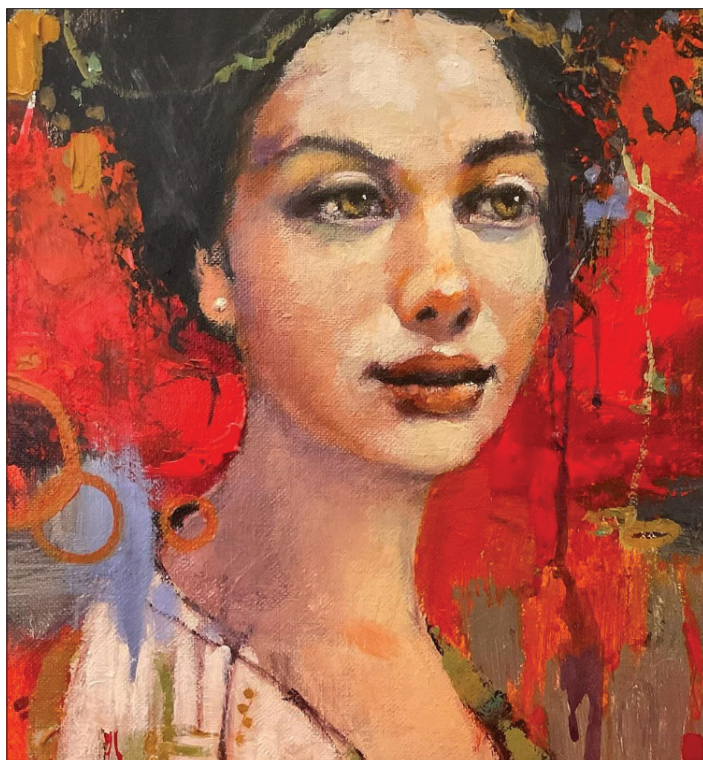
McClelland Sculpture Park+Gallery 390 McClelland Drive, Langwarrin PO Box 8064 Carrum Downs Victoria 3201

Website: www.mcclellandartists.org.au

Facebook: McClelland Guild of Artists

Volume 42 Issue 3

ACN - A0003903D



SATURDAY 4 MAY - JENNY CROOM - CONTEMPORARY FACES IN ACRYLIC

ALL WELCOME - **ARTIST DEMONSTRATIONS AT THE STUDIO** - MORE INFO PAGE 5

SATURDAY 1 JUNE - CATHERINE LAWLOR - ABSTRACT IN MIXED MEDIA



2024 DIARY DATES

SATURDAY 4 MAY DEMONSTRATION	JENNY CROOM Contemporary Faces in Acrylic 1.30pm - 3.30pm
SUNDAY 19 MAY WORKSHOP	ROBERT KNIGHT Landscape in Oil See Page 3 for details
SATURDAY 1 JUNE DEMONSTRATION	CATHERINE LAWLOR Abstract in Mixed Media 1.30pm - 3.30pm
SATURDAY 3 AUGUST DEMONSTRATION	CLIVE SINCLAIR Landscape in Watercolour 1.30pm - 3.30pm
SATURDAY 23 & SUNDAY 24 NOVEMBER	ARTISANS AT McCLELLAND

A VERY WARM WELCOME TO NEW MGOA MEMBERS:

- Christopher Haller • Neil Chisholm • Tania Banfield •
• Sheena Rose • Hiral Desai • James Kavanagh •
• Lee Cummins • Roberta McGregor •
• Kerry Ttofari, Isaiah Eecen, Naomi Eecen •
• Clara, Lorena, Daniel & Gabriel Palamara •

GUILD CONTACT DETAILS

Find
us on
Facebook



McCLELLAND GUILD OF ARTISTS
Website: www.mcclellandartists.org.au
Facebook: McClelland Guild of Artists
Email: info@mcclellandartists.org.au

Follow our Facebook page for the latest Guild news about upcoming workshops, pop-up classes and artist demonstrations. You can also get in contact with the Guild via Messenger

MEMBERSHIPS DUE - 1 JULY 2024 - See Page 7

2024 CLASS TERM DATES

TERM 2	Monday 15 April - Saturday 22 June
TERM 3	Monday 15 July - Saturday 14 September
TERM 4	Monday 7 October - Saturday 7 December

BECOME A MEMBER OF McCLELLAND GUILD OF ARTISTS

Membership offers:

- Studio facilities in beautiful bushland of McClelland Sculpture Park+Gallery Langwarrin • Participation in the Guild's general program, including workshops, art shows / exhibitions and the popular Artist of the Year competition • Access to self-help portraiture and other self-help groups
- Reduced workshop fees & admission charge at monthly demonstrations • Fellowship of a friendly group of painters both professional and amateur working together in a stimulating and supportive environment
- Bi-monthly newsletter • Opportunities to see and be challenged by McClelland Sculpture Park+Gallery exhibitions and displays
- Membership yearly subscription for the financial year (1 July to 30 June) \$50 Adult - \$65 Family

MEMBERSHIP APPLICATION FORM PAGE 7

IMPORTANT NOTICE - PALETTE NEWS

If you have requested your Palette News newsletter be sent via email and have not received it please check your Spam Mail Folder. If it is not there please contact Gaby
Email - newsletter@mcclellandartists.org.au

GUILD COMMITTEE MEMBERS 2023 - 2024



PRESIDENT
Demonstrations &
Workshop Co-ordinator
LIZ STOTT
Telephone: 9781 1001



VICE PRESIDENT
Tuition & Artist of the
Month Co-ordinator
MARY HENNEKAM
Telephone: 9775 8825



TREASURER
Membership Secretary
BARRY STOTT
Telephone: 9781 1001



SECRETARY
MARG GREENAWAY
Mobile: 0422 567 987



SOCIAL MEDIA
MARION LESTER
Mobile: 0425 274 009



**PALETTE NEWS
EDITOR**
GABY PARANTHOIENE
Mobile: 0421 732 805

DEADLINE FOR NEWSLETTER 12th of every 2nd month i.e. February/April/June/August/ October/December
NEWSLETTER EDITOR Gaby Paranthoiene Email: newsletter@mcclellandartists.org.au
DO YOU HAVE ANYTHING TO SHARE IN PALETTE NEWS?

Anything art related, forthcoming exhibitions, art stories, items of interest or if you, or someone you know, have recently received an award for an artwork please pass this on so we can acknowledge this achievement. Send to: newsletter@mcclellandartists.org.au

President's Report

I'm struggling to think of something to write about for this issue... which is unusual for me - not often stuck for words.

With Membership renewals imminent (30 June, 2024), I would like to remind everyone that fees will increase this year to \$50.00 (single) and \$65.00 (family). This is a small increase which I hope you will be able to manage. Note: This increase was approved unanimously at a previous AGM with the proviso that we would put it into place when necessary. We did leave it as status quo for the 2023/24 year, but due to rising costs, it is now time to implement the increase. Thank you for your continued support.

Our memberships are at a level not seen since well before Covid with numbers gradually increasing over the last 2 years.

The Committee is currently overseeing a much needed re-furbishment program of the studio. Nothing too grand, but necessary repairs are required following bouts of heavy rain last year, when there was evidence of water entering

the building. We are hopeful that with scheduled work, this problem will be fixed. The dream is new flooring, but first things first. New signage (featuring our Logo) has been ordered and should soon be in place.

Generally, classes are doing well, with both junior classes full and most adult classes at capacity. Life drawing is a little light on at this stage - a handful of our regular group unavailable due to extended holidays and the inevitable medical issues. There is space for a couple more. Must mention the introduction of the new oil class with Lulu Evans, with both tutor and students eager to make a start this term.

I'm taking this opportunity to thank the hard-working committee who come up with brilliant ideas on how to make more people aware that we occupy this piece of paradise in the park. Also like to thank members who come along to help with demonstrations and other social functions. Having you all on board to help is very much appreciated.

Liz Stott

Members' News

SAVE THE DATE

ARTISANS AT McCLELLAND GUILD ART EXHIBITION & COMPETITION

SATURDAY 23 & SUNDAY 24
NOVEMBER 2024

EMERALD
ARTS
Society

THE JOHN
DUDLEY
PORTRAIT
PRIZE

This Annual Exhibition celebrates the life of a great artist, past president and proud supporter of the arts.

Proudly presented by the Emerald Arts Society and Cardinia Shire

Entries close: Saturday 22 June 2024
Opening: 7pm Friday 19 July 2024

If you have any queries please contact
portrait@emeraldartssociety.com.au
or Russell 0419 364 554

ARTISANS AT McCLELLAND

The MGoA will be holding a Members Art Competition again in 2024 and we would love as many members as possible to enter. The theme for this year will be "*The Flora of McClelland Sculpture Park+Gallery*". Inspiration must be taken from the grounds of the park - a landscape, a leaf, a flower. There will also be prizes and with only 5 months to go it's time to get painting!

MEMBERSHIPS DUE

1 JULY 2024 - See Page 7

IPAD PAINTINGS BECOME PUPPY POSTCARDS

Inspired by David Hockney's exhibition at the NGV featuring iPad paintings, long standing Guild member Fran Henke, started drawing and painting dogs she saw at Hastings Jetty on her iPad too. These became more adventurous as she experimented with the Sketchbook app, and were well received when posted on social media. She decided to turn them into postcards. "I had them printed by Vistaprint on glossy card, they have come up well. Cost was reasonable including prompt postage," Fran said. "They are on sale at Petersen's Bookstore, Hastings, and will also be at the Western Port Craft Expo on April 20 and at the RSPCA's Million Paws Walk in May, so it's another way to get your work out there affordably." PS: Fran tried printing the cards herself, but accidentally put yellow in the red container on her Canon printer!



ROBERT KNIGHT Landscape in Oil Workshop

Sunday 19 May

AT THE McCLELLAND GUILD
OF ARTISTS STUDIO
COST: \$70 MEMBERS
\$85 NON-MEMBERS

TIME: 10am - 3.30pm

Morning & afternoon tea supplied

Bring your own lunch

More details on Page 7

WORKSHOP ORGANISER

Liz Stott - Telephone: 9781 1001

WHAT'S ON



McClelland

Music at McClelland Every third Sunday
of the month starting February 2024

Rick Amor Drawing Award

30 March - 21 July

Visionary: Recent Donations to the
McClelland Collection

30 March - 21 July

Ron Mueck's Wild Man

30 March - 21 July

Sculpture Workshop with Beci Orpin

Saturday 27 April

International Sculpture Day

Free Guided Tours - Saturday April 27

Celebrating First Nations at McClelland

Saturday 18 May

Life Drawing at McClelland

with Leyla Bulmer - 25 May & 22 June

Art and Architecture Tour

of central Frankston - Sunday 2 June

www.mcclelland.org.au

MARCH DEMONSTRATION with PETER PORTEOUS

MGoA tutor Peter Porteous took an audience of 40 on a trip around the bay at his demonstration ending up in "Sorrento At Sunrise". Taking inspiration from one of his photographs on his iPad, Peter worked his magic in watercolour, using washes to create light and atmosphere.



His aim for this demonstration piece was to achieve a gentle light coming through the painting.



Demonstration Notes:

- Preferred colours from the Daniel Smith range of water colours: Moonglow, Quinacridone Sienna, Cobalt Teal and a dark purple.
- Started by wetting the paper to the horizon line using a hake flat brush - as this brush holds water quite well. Normally he would work on a flat surface.
- Tissues were used for gentle lifting off paint. His favourite brush is his rigger.
- He stressed that the colours in the sky had to be in the water.
- Masking fluid was used to make the sun and revealed when the painting was dry.
- He used the dagger brush like he was using a colouring in pencil.
- Vertical strokes and horizontal strokes were necessary to create movement in the water.
- Used a scalpel towards the end to "Highlight" areas, especially in the water area. Once you use a scalpel, a wash will not leak into that area.
- He finished his painting with gentle washes.



MARCH ARTIST OF THE MONTH

Still Life in any medium judged by Peter Porteous

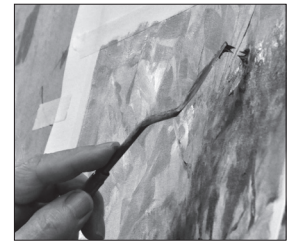
1. Joan Denner
2. Maureen Lynch
3. Melinda Saunders



Many thanks to Marg Greenaway for operating the camera & taking notes.

APRIL DEMONSTRATION with ROBERT KNIGHT

Robert Knight produced magic over a couple of hours at McClelland Guild of Artists demonstration in April. Working from a reference photograph and with only six colours on his palette, a very modest range of tools and a lot of painting he created a contemporary Australian landscape in oils.



APRIL ARTIST OF THE MONTH

Landscape in any medium judged by Robert Knight

1. Maureen Lynch
2. Derrick Shaw
3. Louise Keegan



Demonstration Notes:

- Robert used a limited palette containing Ultramarine Blue and Cobalt, Yellow Ochre and Cadmium Yellow, Cadmium Red and Alizerin plus Raw Sienna - does not use any greens.
- Used primed linen canvas underpainted with yellow oxide slopped all over so painting can remain as loose as possible.
- At the begining of painting he

looked for shapes not detail and didn't worry about getting everything in the right spot.

- Put lots of paint on his palette so then you are committed and not painting sparsely - "You will paint differently!"
- A lot of the colour mixing occured on the canvas creating a dynamic painterly and different effect.
- He used his paint brushes in different ways, twisted them, scribble them around.

Many thanks to Fran Henke and Barry Stott for taking photos and Felicity Symons for operating the camera and taking notes.



Members' News

MAY DEMONSTRATION

JENNY CROOM
CONTEMPORARY FACES IN ACRYLIC
SATURDAY 4 MAY - 1.30pm - 3.30pm



Painting is one of the great loves of her life. Many years of experience has been her teacher, though she has had some wonderful tutors along the way. For many years she painted landscapes in oils with success and recognition. Jenny then branched into acrylic paint and abstracts until she found the joy of painting people.

When Jenny starts a painting it is with great anticipation and minimal planning. She has been painting faces for several years now and loves seeing a believable face emerge from the canvas. Once the face is there, she will loosen up with all else on the canvas and let the paint and the idea of the image guide her. Beyond the face, Jenny wants to go past realism with wayward colour and bold, visible brush and knife marks to create an impression that hints at, rather than explains a mood or setting, sometimes adding collage, or creating drawn pattern but always with at least one face and strong lines to anchor the image.



Currently Jenny is working on becoming looser with her mark making using charcoal, pencil or oil pastel, and more abstract in her design. She has had several exhibitions at Ryazanoff Gallery, and has been invited into group exhibitions at 26 Advantage Gallery and Oak Hill Gallery. At the Inaugural McClelland Artisans Exhibition in 2022 Jenny was awarded the People's Choice Award. She also holds workshops.

"I will continue in both acrylic and multimedia, not feeling bound to conform to existing 'portrait' norms, but to paint a face that communicates some very human quality to me and hopefully to you, the viewer. I intend to continue to experiment and learn for as long as I paint." JC

MAY ARTIST OF THE MONTH COMPETITION

Theme at the Jenny Croom Demonstration - Faces in any medium

JUNE DEMONSTRATION

CATHERINE LAWLOR
ABSTRACT IN MIXED MEDIA
SATURDAY 1 JUNE - 1.30pm - 3.30pm

Catherine Lawlor is an abstract expressionist painter and lives on the Mornington Peninsula. As a Mother, Grandmother, Nurse and Educator her art has always been a respite from a hectic, busy life transporting her to the meditative joy of creation and expression. The highs and lows of life have provided a rich tapestry to draw upon for her art, evolving into a bold signature style. Her formal studies were at RMIT, Melbourne where she was tutored by world class artists, she was challenged and inspired to move from the formal drawing classes to large scale abstract expressionist pieces. Completing a Diploma in Visual Arts and a Bachelor of Fine Arts she relished five incredible years

of study at an innovative and creative University and last year she spent time studying in Florence.



"My process of creation starts with meditation to find a heightened state of awareness and focused attention. The canvas or paper is placed on the floor where I can move freely around in a dance of movement splashing, spraying and throwing ink and acrylic paint.

There is no planning but a direct method of application with gestural movements and performance, intuitively creating a symphony of colours and a balanced composition. I favour acrylic and watercolour paints, inks and pen. Once dry they form a foundation for detailed fine drawings. Through layered additions, I work to create a harmonious composition, reflecting a strong feminine energy juxtaposed with vibrant, colourful and joyful images. I bring my life experiences into my art wanting the viewer to immerse in the depths of my compositions and share my positive energy. I love that my viewers can escape into a realm of colours, light, form, shapes and movements to find an expression of total freedom." CL

JUNE ARTIST OF THE MONTH COMPETITION

Theme at the Catherine Lawlor Demo - Abstract in any medium

ARTIST OF THE YEAR AWARD

PROUDLY SPONSORED BY



Guild Members are invited to bring a painting on demo days and take part in the Artist of the Month Competition. The subject of the painting must relate to the theme of that demo and the work can be in any medium. Entries are judged by the guest artist and points given toward the Artist of the Year Award. POINTS: 5 points for first place, 4 points for second place, 3 points for third place. Every painting (except placegetters) entered on the day receive one point towards the end-of-year competition.

ALL WELCOME DEMONSTRATIONS @ THE STUDIO

Cost \$10 Members - \$12 Non-Members

On the first Saturday of the month we encourage all members and visitors to come and observe a professional artist at work who will guide us through their unique approach to their art. The afternoon tea break gives the opportunity to study the work in progress and talk to the artist.

2024 TERM TWO ADULT CLASSES

LULU CLIFTON-EVANS
LEARN THE BASICS OF OIL PAINTING
FROM THE START USING
ALTERNATIVE LESS TOXIC SOLVENTS
 TERM 2 - \$195.00

WEDNESDAYS 9.30am - 12.00pm

"A class for beginners who would like to learn oil painting but don't know where to start or how to begin and for people who want to re-visit the basics. This class will also focus on non-toxic solvent alternatives."

SELF-HELP PORTRAITURE GROUP

WEDNESDAYS 1.00pm - 3.30pm

\$10.00 per session towards cost of models.

We invite you to join our very friendly, non-judgmental group, where you are free to paint in a medium of your choice while you gain help and inspiration from like-minded artists.

If you would like to sit or know of someone who would be happy to offer their services on two consecutive Wednesdays from 1.00pm - 3.30pm Please telephone Mary Hennekam on 9775 8825. Fee \$40.00 Per Week.

CAROLE FOSTER
ART IS THE FINAL GOAL (MODERN / ALL MEDIUMS)
 TERM 2 - \$255.00

THURSDAYS 9.30am - 1.30pm

"In this class, my objective is to free people up and get them 'out of their box' or mind set, so they are able to connect with their own feelings and express themselves with enjoyment along their own creative path. During the course of this process, they will acquire technical skills and stretch their boundaries in the use of paint and any other material in developing their ideas."

PETER PORTEOUS
THE POETRY OF WATERCOLOUR
 TERM 2 - \$195.00

FRIDAYS 10.00am - 12.30pm

While still touching on traditionalism and painting theory, the focus of this class is to explore a more casual, spontaneous, free flowing and expressive forum. The various applications of paint and water will create movement, which enhances the play of light, mood and atmosphere. This will be incorporated into various subjects. The essence of each student's unique style and creativity will therefore be absorbed into their work.

MAXINE WADE
LIFE DRAWING (ALL MEDIUMS)

TERM 2 - \$200.00

(Cost of model is included in term fee)

FRIDAYS 1.30pm - 3.30pm

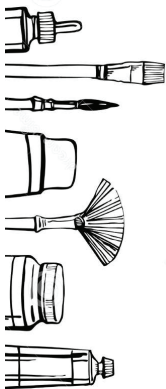
Students will be using all mediums (charcoal sticks, compressed charcoal, graphite, pastel, Pan Pastel, Inks, coloured pencils etc.) on a variety of different surfaces. A life model will be used most weeks. Other sessions will be used to develop drawings done in previous classes.

MODELS NEEDED FOR THE GUILD SELF-HELP PORTRAITURE GROUP

If you would like to sit or know of someone who would be happy to offer their services on two consecutive Wednesdays from 1.00pm - 3.30pm for a fee of \$40.00 pr week please contact Mary Hennekam 9775 8825



2024 TERM TWO JUNIOR CLASSES - AGES 8 - 12



PLEASE NOTE:

All art materials needed for Junior Classes are included in the term fee

PAULINE WOODHOUSE
DRAWING & PAINTING
 TERM 2 - \$180.00 per 9 week term
 WEDNESDAYS 4.30pm - 6.30pm

PAULINE WOODHOUSE
DRAWING & PAINTING
 TERM 2 - \$180.00 per 9 week term
 SATURDAYS 10.00am - 12.00 noon

"Art and craft have been a lifelong passion for me, it's fun, relaxing and rewarding. I have worked in the graphic design industry since beginning my career in 1964 as a designer, illustrator and finished artist. I have taught computer graphics and animation at TAFE level and have also run my own art gallery and art school, teaching art and sculpture to adults as well as running a children's art and craft club four afternoons a week. I believe teaching children is a creative opportunity to help stimulate their imagination and their freedom of expression. It boosts their confidence while they engage in fun projects, as they learn the many aspects of composition, art and mediums, and the basics of painting, drawing, perspective and colour mixing." PW

For further class information contact - MARY HENNEKAM - TUITION CO-ORDINATOR Telephone 9775 8825

PLEASE NOTE: All students are required to be a member of the Guild to attend classes. A Tuition Enrolment Form (Page 7) must be completed along with payment of tuition fees TWO weeks prior to commencement of term. (If paying by Direct Credit, an Enrolment Form can be left in the black box at the studio.) The Guild does not offer credit or make-up classes to students who miss classes.

IMPORTANT NOTICE FOR STUDENTS

- ANNUAL MEMBERSHIP FEE: \$50.00 Due the beginning of the financial year 1ST JULY, for 12 months.
 - All students MUST BECOME MEMBERS of The Guild prior to applying to join a class.
- MEMBERSHIP SECRETARY: BARRY STOTT 0418994573 or email: info@mcclellandartists.org.au
- CLASS FEES are based on the assumption all students have paid the required membership fee.

McCLELLAND GUILD OF ARTISTS INC TUITION / WORKSHOP FORM

PLEASE TICK: GUILD MEMBER YES NO

PLEASE PRINT CLEARLY:

Name: _____

Address: _____

Suburb / Town: _____

Postcode: _____

Telephone: _____

Email: _____

TUTORED CLASSES
FOR REGISTERED GUILD MEMBERS ONLY
Fees are per term and are to be paid
two weeks before term begins.

WORKSHOPS
COST: \$70 MEMBERS - \$85 NON-MEMBERS
Time: 10am - 3.30pm.
Morning/afternoon tea supplied. Bring own lunch.

Tutor Name: _____

Class / Workshop: _____

Term / Date: _____

Fee \$ _____

Signature _____ Date _____

ELECTRONIC BANKING:
BSB 633 108 Account Number 1440 43114
Account Name: McClelland Guild of Artists Inc.

PLEASE MAKE CHEQUES PAYABLE TO:
McClelland Guild of Artists Inc.

COMPLETE FORM & MAIL CHEQUE TO:
McClelland Guild of Artists Inc. P.O. Box 8064 Carrum Downs, 3201
TUITION CO-ORDINATOR - Mary Hennekam
OR WORKSHOP ORGANIZER - Liz Stott

McCLELLAND GUILD OF ARTISTS INC MEMBERSHIP APPLICATION

PLEASE TICK: NEW MEMBER RENEWAL

ADULT: (SINGLE) \$50

FAMILY: \$65

PALETTE NEWS - THE GUILD NEWSLETTER:

RECEIVE VIA EMAIL

RECEIVE BY POST

PLEASE PRINT CLEARLY:

Name: _____

Address: _____

Suburb / Town: _____

Postcode: _____

Telephone: _____

Email: _____

Yearly subscription for the twelve months financial
year from 1 July to 30 June the following year:

ADULT: \$50 (*Single*)

FAMILY: \$65 (*Please include all family member names*)

Signature _____ Date _____

ELECTRONIC BANKING:
BSB 633 108 Account Number 1440 43114
Account Name: McClelland Guild of Artists Inc.

PLEASE MAKE CHEQUES PAYABLE TO:
McClelland Guild of Artists Inc.

COMPLETE FORM & MAIL CHEQUE TO:
McClelland Guild of Artists Inc.
P.O. Box 8064 Carrum Downs, 3201
MEMBERSHIP SECRETARY: Barry Stott

IMPORTANT NOTICE FOR STUDENTS

- ANNUAL MEMBERSHIP FEE: \$50.00 Due the beginning of the financial year 1ST JULY, for 12 months.
 - All students MUST BECOME MEMBERS of The Guild prior to applying to join a class.
- MEMBERSHIP SECRETARY: BARRY STOTT 0418 994 573 or email: info@mcclellandartists.org.au
- CLASS FEES are based on the assumption all students have paid the required membership fee.



ARTIST COLOURS
BRUSHES & ACCESSORIES
CUSTOM STRETCHED CANVAS
FINE PAPER
LINENS & COTTONS

4/72 DANDENONG ROAD WEST
FRANKSTON 3199

TELEPHONE 9783 6044

www.seniorart.com.au



above the mantle FRAMEWORKS

12 Shannon Street, Frankston 3199

Email: Surfpic1@bigpond.net.au

Telephone: 9783 3966

MEMBERSHIPS DUE
1 JULY 2024 - See Page 7

SAVE THE DATE

**ARTISANS AT
McCLELLAND &
GUILD ART EXHIBITION**

SATURDAY 23 & SUNDAY 24
NOVEMBER 2024

The MGoA will also be holding their
annual members art competition

THIS YEAR'S THEME:
**The Flora of
McClelland Sculpture Park+Gallery**



McCLELLAND GUILD OF ARTISTS

Like and Follow our Facebook page and receive the latest Guild news including information about upcoming workshops, pop-up classes and artist demonstrations. You can also get in contact with the Guild via Messenger.

FREE PROFESSIONAL ADVICE

Free professional advice to the McClelland Guild of Artists community on all aspects of website creation, internet marketing and selling online (ecommerce).

This is a 100% free, no obligation service.

For the past 40+ years my family have been involved with the McClelland Guild of Artists. Today I'm a digital marketing professional with over a decade in ecommerce and two decades in corporate marketing. I'm happy to answer questions or offer advice on these topics.

To begin, visit: <https://bit.ly/owenbolwell-mcclelland-artists>

OWEN BOLWELL
owenbolwell.com

DEMONSTRATIONS @ THE STUDIO

The Committee would like to encourage members to submit names of artists that they would like to see at the Saturday Demonstrations.

Email suggestions to Liz Stott
elisabethstott@outlook.com



SEAFORD

Owners: Peter & Kathy Brewster

M: 0410 727 055 or 0408 881 194

E: print@seaford.kwikkopy.com.au

T: (03) 9708 2928

W: seaford.kwikkopy.com.au

KWIK KOPY SEAFORD
Factory 10, 32 Silkwood Rise
Carrum Downs, Victoria 3201

Jack-Of-It Electrical Services

Domestic - Commercial - Industrial

A-Grade Electricians

Jon Burstow - Shaun Burstow

0407 101 023

- Electrical Installations/Repairs
- Data Comms - Internet/Phone
- Air Conditioning Installations
- Fully Licenced and Insured

Email: jon@jack-of-it.com.au

Web: www.jack-of-it.com.au

Find us on Facebook



Registered Electrical Contractor 28606

ALL WELCOME DEMONSTRATIONS @ THE STUDIO

COST \$10 Members

\$12 Non-Members

PLUS

**Members Artist of the Month
Competition & Afternoon Tea**

On the first Saturday of the month we encourage all members and visitors to come and observe a professional artist at work who will guide us through their unique approach to their art. The afternoon tea break gives the opportunity to study the work in progress and talk to the artist.